



SANTHEM
RESIDENCES



Apartment 10

Santhem Residences Shenfield
Rayleigh Close, Shenfield, Essex CM13 1FD

£590,000

Other charges apply.

PROPERTY DETAILS AND FEATURES

Substantial L-shaped one bedroom apartment, located conveniently on the ground floor. This charming home features an open plan living/dining room and kitchen area with direct access to the private terrace, ideal for al fresco dining. The bedroom is spacious and benefits from a large walk-in wardrobe. The separate bathroom includes Villeroy & Boch sanitaryware.

(The apartments are sold unfurnished)

APARTMENT 10

KITCHEN

- Fully fitted Hacker kitchen
- Neff oven, induction hob and microwave
- Integrated Electrolux fridge/freezer and dishwasher
- Glass splashback

BATHROOM

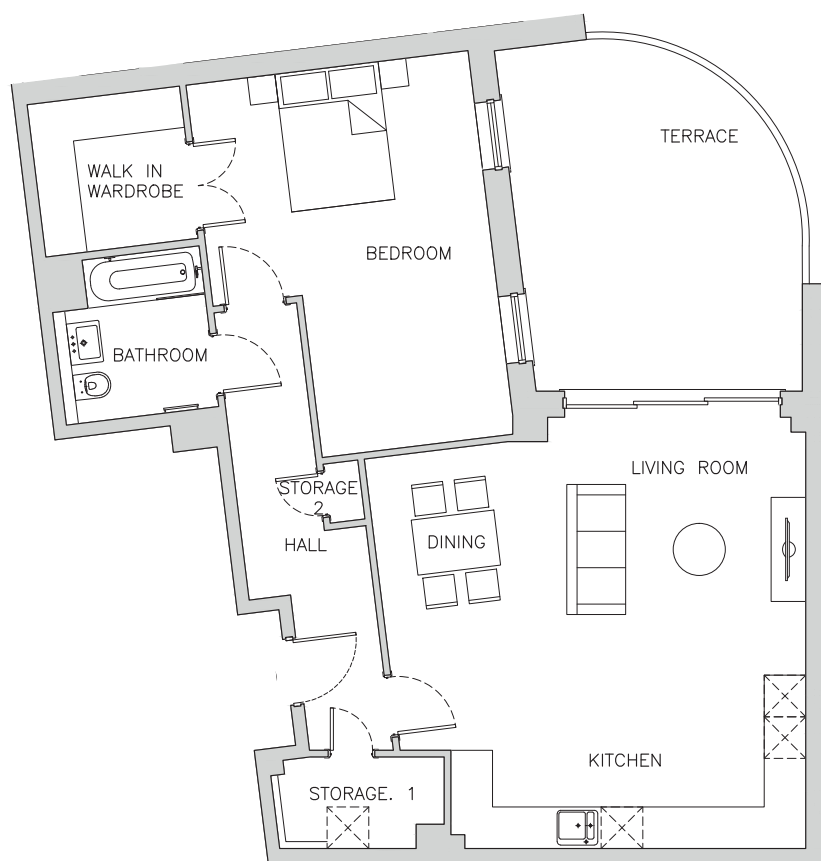
- Bath, basin and WC with Villeroy & Boch fittings
- Overhead shower head and arm
- Chrome electric towel radiator
- Heated mirror fixed to wall above wash basin

ELECTRICAL AND HEATING

- Downlighters and light fittings throughout
- Laundry cupboard complete with Bosch washing machine and tumble dryer
- Underfloor heating
- Telephone and aerial points throughout

FLOORING AND FINISHES

- Amtico wooden floor to hallway and kitchen
- Tiled floors to bathroom
- Carpet to bedrooms and lounge/dining area
- Walnut front door
- Rooms painted neutral colours
- Polished chrome sockets and switches
- Walk-in wardrobe in bedroom
- Private outdoor space in the form of a patio



Room Name	Metric (m)	Imperial (ft & inches)
Living	3.5m x 4.3m	11'6" x 14'1"
Dining	4.2m x 2.1m	13'10" x 6'10"
Kitchen	2.5m x 5.1m	8'2" x 16'9"
Storage 1	1.3m x 2.4m	4'4" x 7'9"
Storage 2	0.9m x 0.5m	2'10" x 1'8"

Room Name	Metric (m)	Imperial (ft & inches)
Bedroom	5.6m x 4.1m	18'3" x 13'5"
Walk-in Wardrobe	2.2m x 2.2m	7'3" x 7'3"
Bathroom	2.3m x 2.2m	7'8" x 7'3"
Total Area	79.3m²	853.27ft²

Say Yes! to exceptional retirement living in Essex.

enquiries@santhemresidences.co.uk | Tel: 01277 508999